

Home India Ram Mandir Inauguration: Know Tata Group's Ingenious Role In Ayodhya Temple's Engineering Marvel

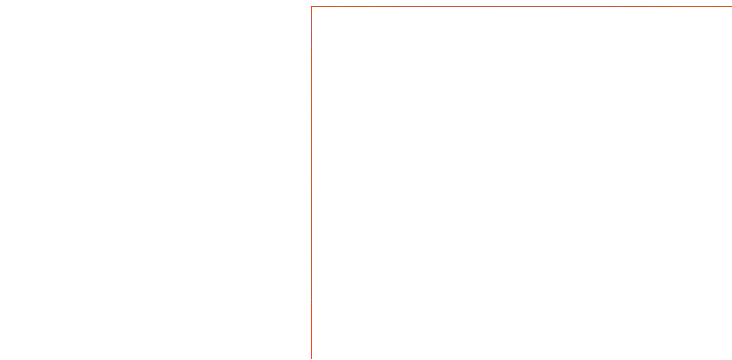
Ram Mandir Inauguration: Know Tata Group's Ingenious Role In Ayodhya Temple's Engineering Marvel

Tata Consulting Engineers (TCE) was appointed as the design review, engineering and project management consultant for the entire project to ensure that the amalgamation of ancient faith and modern science would be a place of worship that also signifies India's self-reliance and prowess in engineering.

S Balakrishnan | Updated: Tuesday, January 23, 2024, 08:55 PM IST



Ram Mandir | X



Mumbai: Apart from the historic new parliament building, the Tata Group was involved in the construction of the Ramjanambhoomi temple at Ayodhya as well. Tata Consulting Engineers (TCE) was appointed as the design review, engineering and project management consultant for the entire project to ensure that the amalgamation of ancient

RECENT STORIES

Western Railway Collects Rs 2 Lakh In Single Day From Ticketless Passengers In AC Local Trains



Rajasthan: 5 Armed Men Storm Into Jewellery Shop, Fire Shots Killing Owner, Injuring 2 Others In...



'Will He Say Same Things About Hit Italian Blood': Subramanian Swamy Takes Dig At Rahul Gandhi's...



Karnataka: Instagram Friend Arrested For Kidnapping & Raping 21-Year-Old Woman In Udupi; Police...



Kolkata Woman Doctor Rape-Murder Case: CCTV Footage Shows Accused Sanjoy Roy Spotted At Crime Scene...



faith and modern science would be a place of worship that also signifies India's self-reliance and prowess in engineering.

According to a TCE press release, the temple has been constructed in the traditional Nagara style of temple architecture and constructed using a traditional stone structure made up of sandstone with structural elements joined together by tongue and groove joints. The architectural splendour adorned with intricate carvings and breathtaking artwork has been engineered to last a millennium and withstand natural disasters like earthquakes and floods.

TCE implemented innovative engineering solutions, including advanced 3D structural analysis. The temple underwent a rigorous 3-D Finite Element Method (FEM) static and dynamic structural analysis, akin to what is employed for nuclear plants. It was conducted to ensure the long-term structural integrity of the monument, considering various design loads, including seismic forces, over a staggering return period of 2,475 years.

Read Also

Ram Mandir Pran Pratishtha: List Of Unique Gifts Presented From All Over India To Celebrate...



Here's How TCE Team Dealt With Unforeseen Issues

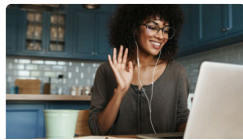
FPJ Shorts



SBI Mutual Fund Gets Reserve Bank's Nod To Acquire Karur...



Ravi Teja Gets Discharged From Hospital After...



People Can Now Ignore Their Boss Post Work; New Law In Thi...



'I Wish They Didn't Have A Monopoly': Harsha Bhogle Slam...

The TCE came on board while the foundation design was already underway. During the initial pile work for the foundation, unforeseen issues emerged, necessitating a thorough review. TCE's team of experts, in collaboration with a panel of engineers, conducted an extensive assessment of the design, revealing vulnerabilities, particularly in relation to seismic forces and limited lateral load capacity.

ADVERTISEMENT

In response, TCE proposed an innovative solution – the use of roller-compacted concrete (RCC) as an engineered fill. This innovative concept, a pioneering endeavour worldwide, received approval from experts, substantiated by settlement analysis confirming its feasibility.

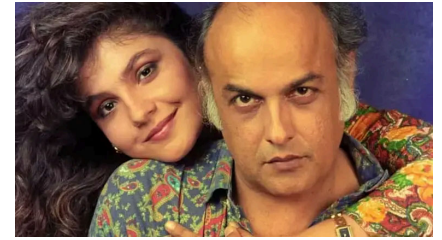
Furthermore, the excavation required for the engineered fill provided an opportunity to unearth cultural debris discovered at depths of 18-20 meters, adding a significant archaeological dimension to the project.

Read Also

Ram Mandir Post-Consecration Ceremony: Rituals For Worshipping Lord Ram Lalla Idol Begin, Check...



PROMOTED CONTENT mgid



Brainberries

पूजा भट्ट ने पिता महेश को लेकर किया चौकाने वाला खुलासा



Carve A Smiling Tomorrow For Little Akshy

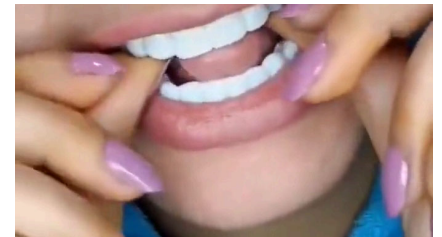
Impact Guru - Chatla Punarnavi

A Health Battle Prevents My Baby From Smiling



Impact Guru - Chatla Punarnavi

Young Aditya Battles A Severe Illness In His Early Years



Lumident Veneers

यह वीनर्स नकली दांतों से 300 गुना बेहतर है! और कीमत बहुत सस्ती है

Doors Made Of Maharashtra Teakwood

The main monument boasts impressive dimensions of 108 meter in length 75 meter in width, and reaches a towering height of 49 meter. It stands supported by a remarkable assembly of 392 pillars, each boasting a floor-to-floor height of 19 feet and 11 inches. There is a total of 42 doors, meticulously fashioned from teakwood procured from Maharashtra.

Among these, 14 doors on the ground floor will be adorned with gold plating, adding a touch of opulence to the temple's design. Amit Sharma, MD & CEO said: "TCE has been at the forefront of this project, contributing significantly to its design, planning, and successful execution. The construction of the Shri Ram Temple in Ayodhya is a remarkable achievement and a testament to our dedication and hard work."

Follow us on



PROMOTED CONTENT



My Little One's Health Keeps His Smile Out Of Reach
Impact Guru - Chatla Punarnavi



Scientists Have Found The No.1 Enemy Of Diabetes! Treatment Here
Insulux



Your Eyes Will See 100% Without Surgery! Write Down The Formula
Visiorax



If You Have High Sugar Then Try This
Insulux



महामारी के समय में सेलेब बेबी बूम
Herbeauty



VIDEO: Helicopter Crashes Near Paud in Pune, Four Occupants Suffer Injuries
freepressjournal.in



कैसे मैंने रातों रात अपने घुटने के दर्द से छुटकारा पाया
Fixit



Central Railway Inaugurates Sonali Iyengar's Sculptures Of Ganpati & Hanum...
freepressjournal.in